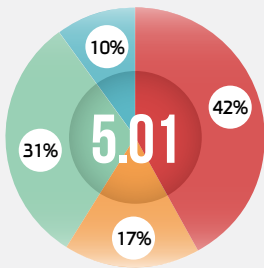
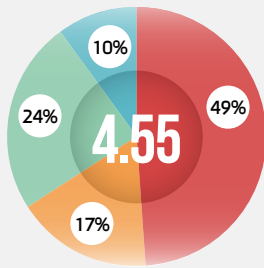


# The 2016 Israeli Foreign Policy Index - Key Findings

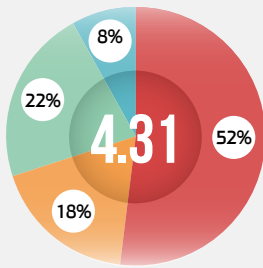
Israel's global standing\*



The government's handling of foreign policy\*

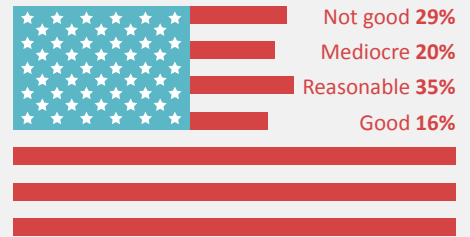


The MFA's ability to fulfill its mission\*

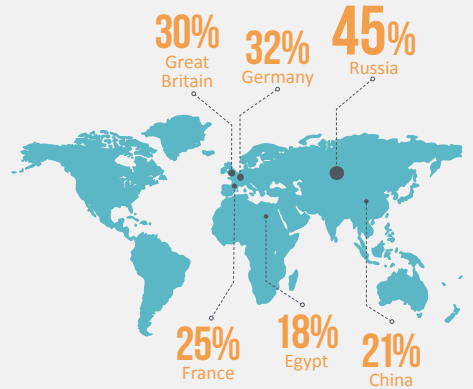


Legend: Good (Blue), Reasonable (Green), Mediocre (Orange), Not Good (Red) \*Out of 10

The current state of Israel-US relations: 5.56 out of 10



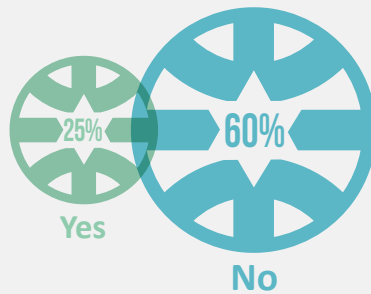
The most important countries for Israel in the world (except for the US)



Israel's top foreign policy priorities



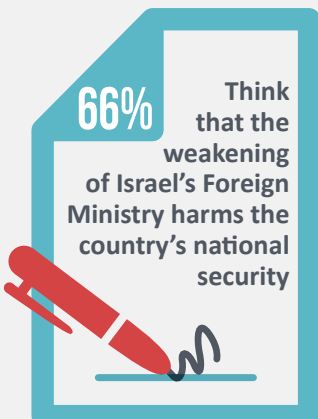
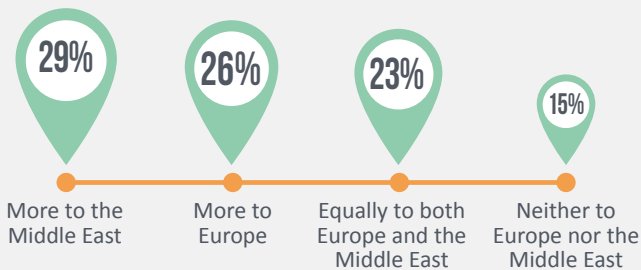
Is Israel's foreign policy based on clearly defined principles?



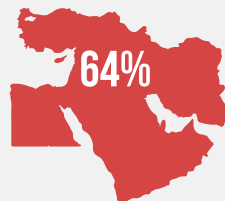
Improving Israel's foreign relations depends on progress in the peace process



Where does Israel belong?



Regional cooperation with Middle Eastern countries is:



**MITVIM**  
The Israeli Institute for Regional Foreign Policies  
www.mitvim.org.il